



PUBLIC WORKSHOP



COMPLIANCE FILING TO UPDATE THE CUSTOMER SURCHARGE TO COLLECT INCREMENTAL COSTS OF DISTRIBUTION UNDERGROUNDING OF THE NEW 138 KV TRANSMISSION LINE IN THE WOOD RIVER VALLEY AND ESTABLISH NECESSARY REGULATORY ACCOUNTING TREATMENT

Case No. IPC-E-24-22

IDAHO PUBLIC UTILITIES COMMISSION

September 17th, 2024, 6:00 PM (MDT)

Workshop Participation

- Online:



- To open chat in WebEx, please select the icon.
- Type questions and comments in the chat box;
 - Please use the “Everyone” option when using chat to ensure your message will be seen.
- To speak, click on the hand icon in the lower section of your Webex screen. I will send you an invitation to unmute your audio line.

- On The Phone:

- ***3** is the command to raise and lower your hand;
I will send you an invite to un-mute your line. Please press ***6** to un-mute your line on your end.

This PowerPoint is available on the commission’s homepage at puc.idaho.gov.



Introductions



Seungjae Lee

Engineer

Matt Suess

Engineer

Jolene Bossard

Utilities Compliance
Investigator

Purpose of Public Workshop

- **Informational session to**
 - Overview the IPUC and its role.
 - Describe the case process.
 - Describe the related case history.
 - Present Idaho Power Company's application.
 - Explain how to submit written comments.
 - Provide an opportunity to ask questions on the application.
- **This Public Workshop is not part of the official case record.**

What is the Idaho Public Utilities Commission?



- Established in 1913. Idaho Code Sections 61 and 62.
- The Commission regulates Idaho's investor-owned utilities, ensuring adequate service and reasonable rates.
- The Commission is made up of three commissioners appointed by the Governor and confirmed by the Senate. The Commissioners make the decisions in each case.
- Commission Staff ("Staff") is made up of Auditors, Consumer Compliance Investigators, Engineers, Technical Analysts, and Admin.
- Staff is conducting this workshop. Staff is one of the Parties in the case and providing comments to the Commissioners.

Progression of the Case

Application

State law requires that the Commission consider all evidence that is on the record, which includes the Idaho Power Company's supporting documentation, Comments from Staff & Parties, and customers' written comments.

Staff's Role

- Staff reviews and analyzes the Company's filing and proposals
- Staff provides recommendations to the Commission based on its analysis.

Final Order

- The Commission will review all evidence and have authority to issue a final order.*

*All Commission decisions must withstand Idaho Supreme Court Appeals from either utility or customer groups



IPC-E-24-22 Schedule



Event	Date
Case Filed	05/31/2024
Public Workshop	09/17/2024 6:00 PM
Written Public Comments	Open through 10/25/2024
Reply Comments Due	11/08/2024
Close of Case	Final Order
Proposed Surcharge Initiation	December, 2024



Case History

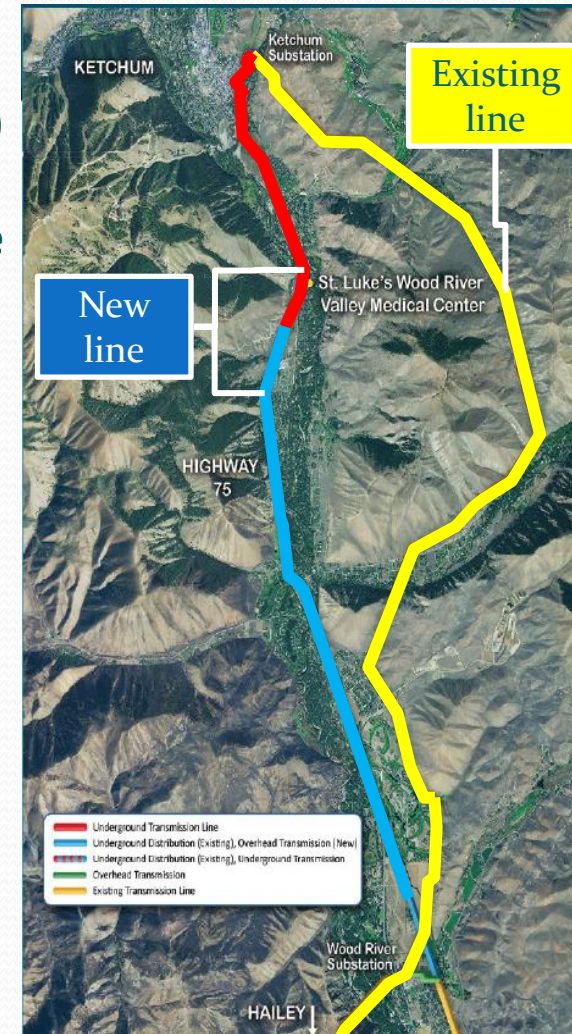
Case No. IPC-E-16-28

Request

- Certificate of Public Convenience and Necessity (CPCN) to construct a new (2nd) 138 KV transmission line and related facilities to provide redundant service **from the Wood River substation, near Hailey, into the Ketchum substation** with a transition from overhead to underground near Elkhorn Rd (CPCN Route).

Commission Order No. 33872

- IT IS HEREBY ORDERED that the Application of the Idaho Power Company in Case No. IPC-E-16-28 is granted. The Commission issues the Company a CPCN for a second 138 kV transmission line as requested in the Application.



Case No. IPC-E-21-25

Request

- Proposed new line configuration (Owl Rock Road Route) with agreement of all parties to include the **underground construction** of
 - (1) **transmission line from Elkhorn Road to Owl Rock Road**
 - (2) **the existing distribution line** along the planned route.
- Estimated **\$9.8M of incremental cost** (difference between two routes)
- Estimated **Surcharge** to recover the incremental cost to be paid by Blaine County customers
 - **\$3.42/month for Residential and Small General Service customers**
 - **\$14.36/month for non-Residential customers**

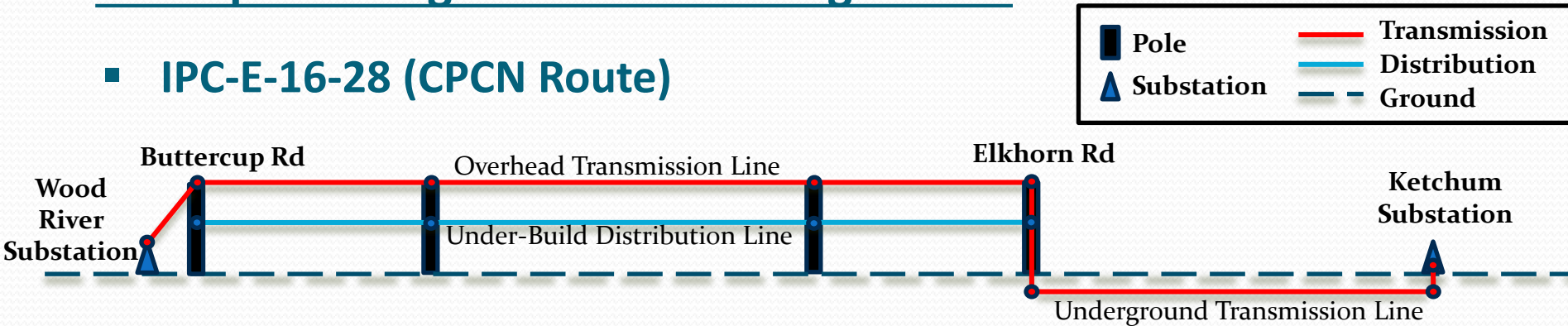
Commission Order No. 35452,

- IT IS HEREBY ORDERED that the Company's Petition is granted as filed. The Commission approves the Company's surcharge for [Blaine County] customers to pay for the incremental undergrounding costs of the Owl Rock Road Route and associated financing costs, as described in the Company's Petition.
- IT IS FURTHER ORDERED that the Transmission Line route approved by the 2017 CPCN in Order No. 33872 is modified to include the Owl Rock Road Route as described in the Company's Petition.

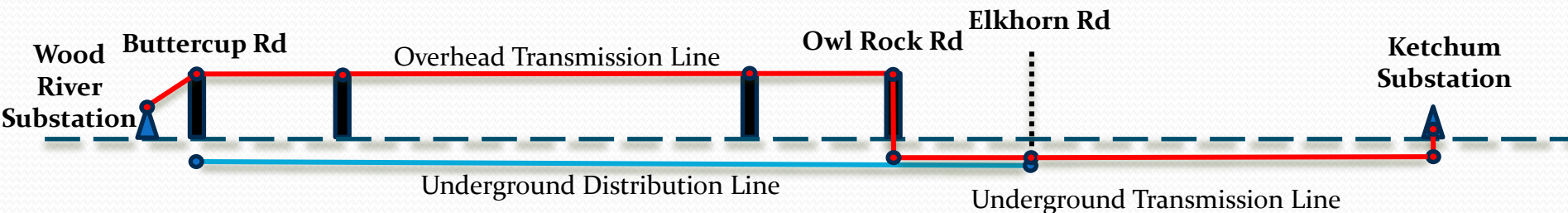
IPC-E-16-28 vs IPC-E-21-25

Conceptual Diagram for line configuration

■ IPC-E-16-28 (CPCN Route)



■ IPC-E-21-25 (Owl Rock Road Route)



■ Differences

(1) Distribution Line Construction Type, (2) Additional underground transmission line between Elkhorn Road and Owl Rock Road, and (3) Pole length/Transmission Foundation/Steel.



Application

Application

Compliance filing from Order 35452.

The Company's Requests:

- To split the surcharge implementation into two phases based on the timing of construction
 - **Phase 1:** December 2024 implementation of **distribution portion (This Application)**
 - Phase 2: 2026 in-service timing with transmission portion surcharge.
- **Incremental Distribution Cost of \$6.2 million**
- Updated **surcharge** amounts on Blaine County customers
 - **\$2.00/month** for Residential and Small General Service customers,
 - **\$8.02/month** for non-residential customers (Large General Service, Industrial, and Irrigation).

Incremental Distribution Line Cost

Calculation (\$millions):

Actual Underground Distribution Line Cost (act.)	\$ 20.0
Overhead Distribution Line Cost (est.)	(-) \$ 11.8
Credit for reduced cost of transmission line (est.)	(-) \$ 2.0
<hr/>	
Incremental Distribution Line Cost in Surcharge	\$ 6.2

Monthly Surcharge on Bill

- This schedule would be applicable to all customers served under the Company's schedules listed below within the corporate limits of Blaine County.

Rate Schedule	Monthly Surcharge
Schedule 1 – Residential Service	\$2.00
Schedule 3 – Master Metered Mobile Home Park	\$2.00
Schedule 5 – Residential – Time-of-Day Pilot Plan	\$2.00
Schedule 6 – Residential Service On-Site Generation	\$2.00
Schedule 7 – Small General Service	\$2.00
Schedule 8 – Small General Service On-Site Generation	\$2.00
Schedule 9S – Large General Service – Secondary	\$8.02
Schedule 9P – Large General Service – Primary	\$8.02
Schedule 9T – Large General Service - Transmission	\$8.02
Schedule 19S – Large Power Service – Secondary	\$8.02
Schedule 19P – Large Power Service – Primary	\$8.02
Schedule 19T – Large Power Service – Transmission	\$8.02
Schedule 24 – Agricultural Irrigation Service	\$8.02

Monthly Surcharge on Bill

- The surcharge period is expected to be twenty (20) years.
- The Company will stop applying the surcharge the month at which the incremental cost has been fully paid.
- Any overage will be refunded to Blaine County customers.



Consumer Assistance

Jolene Bossard

Utilities Compliance Investigator

Consumer Assistance

- Utility Compliance Investigators assist customers to resolve issues and/or disputes with the Company.
- Investigators monitor compliance with laws, commission rules, and the Company's tariff.
- Investigators review issues from previous cases, review previous complaints, review submitted comments from customers, and investigate consumer issues raised in the case.

Consumer Issues

As of this week, the PUC has received 4
Customer Comments

- Hardship on lower income families
- Unfair distribution of costs based on usage / property values

CUSTOMER COMMENTS

Customer written comments are due October 25, 2024.
(Reference Case Number **IPC-E-24-22**)

- Internet Website Address – puc.idaho.gov
- Select - Case Comment Form (once comments are submitted, they become part of public record)
- Email – Address: secretary@puc.idaho.gov
- Mail – IPUC, PO Box 83720, Boise, ID 83720-0074
 - Blank Customer Comments sheets are available here tonight to be mailed in or left with Staff.

**Note: Per order 36297, there will not be a
Public Customer Hearing**

Idaho Public Utilities Homepage



Home Cases ▾ File Room ▾ Laws & Rules ▾ Consumers ▾ Press Releases About us ▾ Contact us ▾

-  **Case Comment Form** 
-  **Annual Gross Intrastate Revenues Report Form**
-  **Electric**
-  **Telecom**
-  **Water**
-  **Natural Gas**
-  **Rail Safety**
-  **Pipeline Safety**
-  **Multi-Utility**
-  **Tariff Advice**

News Updates

- Idaho Power Company On-Site Generation Compensation Case Virtual Public Workshop Presentation - Sept. 7
- Current Openings - Careers

Comments Form Page

The screenshot shows the top of the Idaho Public Utilities Commission website. The header features the logo with a mountain range and the text "IDAHO PUBLIC UTILITIES COMMISSION". To the right is a search bar with the text "ENHANCED BY Google" and a magnifying glass icon. Below the header is a navigation menu with links: Home, Cases, File Room, Laws & Rules, Consumers, Press Releases, About us, and Contact us.

Case Comment or Question Form

Use this form to **file a comment or ask a question about a utility case** pending before the Commission. If you know the case number, please include it.

Submit electronically below or send in to:

Idaho Public Utilities Commission
P O Box 83720
Boise, Idaho 83720-0074
FAX: (208) 334-3762

Use the [Consumer Complaint / Inquiry Form](#) if you need help resolving a problem with a utility or have a question about your bill, disconnection of service, service reliability and outages, cost of a line extension, customer service, or other issues that are not related to a utility case.

Case Comment Form
Use this form to file a comment or ask a question about a case

Case Number:

First Name:

Last Name:

Address:

City:

State:

Zip:

Daytime Phone:

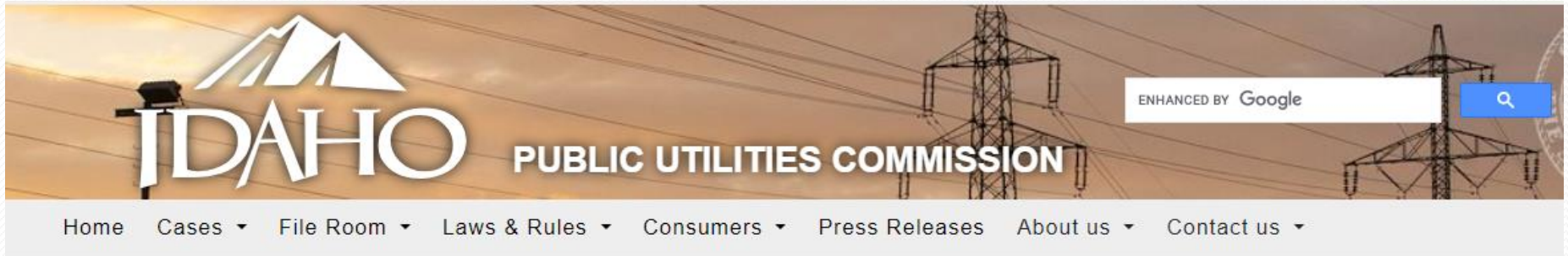
Email:

Utility Company:

I acknowledge that submitting a comment in an open case constitutes a public record under Idaho Code § 74-101 (13) and all information provided by me on this form is available for public and media inspection. My comment may be reviewed by the utility.

Ask a question or state your comment.

PUC Home Page



- [Case Comment Form](#)
- [Annual Gross Intrastate Revenues Report Form](#)
- [Electric](#) ←
- [Telecom](#)
- [Water](#)
- [Natural Gas](#)
- [Rail Safety](#)
- [Pipeline Safety](#)
- [Multi-Utility](#)
- [Tariff Advice](#)

News Updates

- [Idaho Power Company On-Site Generation Compensation Case Virtual Public Workshop Presentation - Sept. 7](#)
- [Current Openings - Careers](#)

Electric Page

[Home](#) [Cases ▾](#) [File Room ▾](#) [Laws & Rules ▾](#) [Consumers ▾](#) [Press Releases](#) [About](#)

Electric

Cases

[Open Cases](#)



[Closed Cases](#)

Resources

[Northwest Power Generation](#)

[Annual Average Rates for All States](#)

[Annual Average Rate by Customer Class](#)

[National Action Plan for Energy Efficiency](#)

[NARUC Committee on Electricity](#)

[Office of Energy Resources](#)

[Western Interstate Energy Board \(WIEB\)](#)

Orders & Notices

[Commission Order No. 36000 - Interest Rate on Consumer Deposits](#)

[Commission Order No. 36141 - Utility Regulatory Fees](#)

Rules

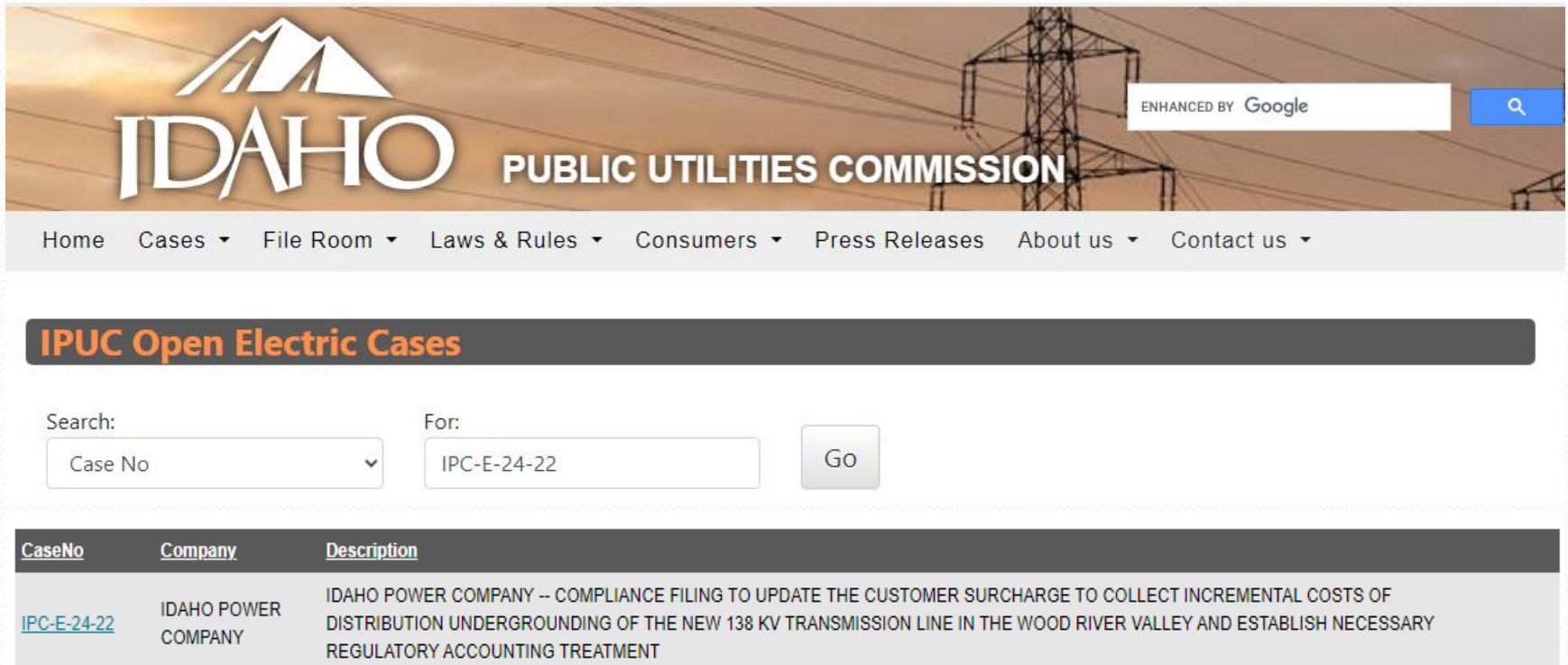
[IPUC Rules](#)

[Safety and Accident Reporting Rules](#)

Avoided Cost Rates

[Avista Avoided Cost Rates For New Contracts](#)

Open Electric Cases Page



The screenshot shows the homepage of the Idaho Public Utilities Commission. At the top left is the logo with the word "IDAHO" in large letters and "PUBLIC UTILITIES COMMISSION" below it. To the right is a search bar with the text "ENHANCED BY Google" and a magnifying glass icon. Below the logo is a navigation menu with links: Home, Cases, File Room, Laws & Rules, Consumers, Press Releases, About us, and Contact us. A dark banner below the menu contains the text "IPUC Open Electric Cases". Underneath is a search form with a "Search:" label, a dropdown menu set to "Case No", a "For:" label, a text input field containing "IPC-E-24-22", and a "Go" button. Below the search form is a table with three columns: "CaseNo", "Company", and "Description". The first row of the table has a yellow arrow pointing to the "CaseNo" cell, which contains the link "IPC-E-24-22". The "Company" cell contains "IDAHO POWER COMPANY" and the "Description" cell contains "IDAHO POWER COMPANY -- COMPLIANCE FILING TO UPDATE THE CUSTOMER SURCHARGE TO COLLECT INCREMENTAL COSTS OF DISTRIBUTION UNDERGROUNDING OF THE NEW 138 KV TRANSMISSION LINE IN THE WOOD RIVER VALLEY AND ESTABLISH NECESSARY REGULATORY ACCOUNTING TREATMENT".

ENHANCED BY Google

Home Cases File Room Laws & Rules Consumers Press Releases About us Contact us

IPUC Open Electric Cases

Search: Case No For: IPC-E-24-22 Go

CaseNo	Company	Description
IPC-E-24-22	IDAHO POWER COMPANY	IDAHO POWER COMPANY -- COMPLIANCE FILING TO UPDATE THE CUSTOMER SURCHARGE TO COLLECT INCREMENTAL COSTS OF DISTRIBUTION UNDERGROUNDING OF THE NEW 138 KV TRANSMISSION LINE IN THE WOOD RIVER VALLEY AND ESTABLISH NECESSARY REGULATORY ACCOUNTING TREATMENT

Case Summary Page

[Home](#) [Cases](#) [File Room](#) [Laws & Rules](#) [Consumers](#) [Press Releases](#) [About us](#) [Contact us](#)

Case Summary

Last Updated	Case Number	Date Filed	Case Type	Status	Description
06/04/2024	IPC-E-24-22	05/31/2024	Application	Notice Received	IDAHO POWER COMPANY -- COMPLIANCE FILING TO UPDATE THE CUSTOMER SURCHARGE TO COLLECT INCREMENTAL COSTS OF DISTRIBUTION UNDERGROUNDING OF THE NEW 138 KV TRANSMISSION LINE IN THE WOOD RIVER VALLEY AND ESTABLISH NECESSARY REGULATORY ACCOUNTING TREATMENT

Case Files



Public Comments

06/07/2024 [COMMENT_1.PDF](#)
06/12/2024 [COMMENT_1.PDF](#)
08/05/2024 [COMMENT_1.PDF](#)
08/06/2024 [COMMENT_1.PDF](#)

Where do we go from here?

- Customers can subscribe to the Commission's RSS feed to receive updates about all cases via email.
- Continue submitting your comments.
- Check the PUC home page, "News Updates" section to see if the Commission has reconsidered holding a Public Customer Hearing.
- The Commission will issue a final order, which will close the case.



You can find case information and file comments on the PUC website:

puc.idaho.gov

Case Number IPC-E-24-22

Direct: (208) 334-0300

Toll-Free: (800) 432-0369

Fax: (208) 334-3762



Questions?